

Subject: Notice Published

From: QHM Portsmouth <portsmouth@qhm.mod.uk>

Date: 16/02/2015 10:44

To: graham.castellano@btopenworld.com



QHM Portsmouth

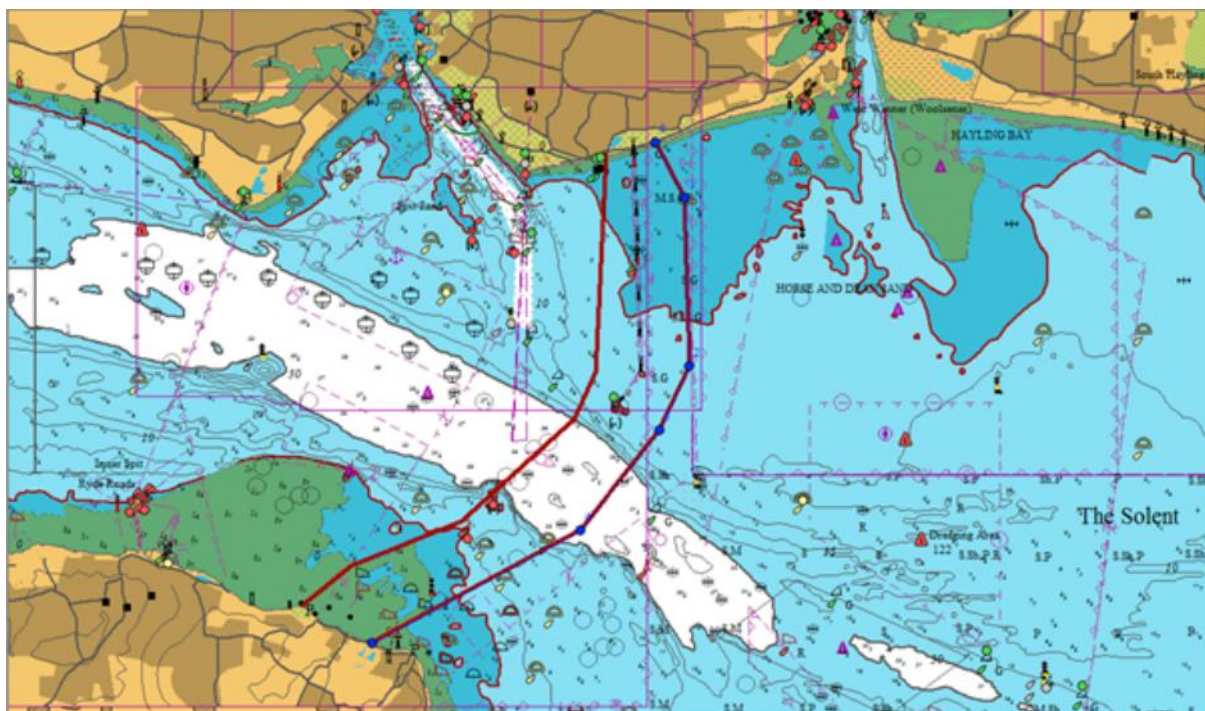
QUEEN'S HARBOUR MASTER PORTSMOUTH
Cable Laying Operations in the Solent including possible Diving
Operations 24 February to 31 March 2015

LNTM No 26/15

1. NOTICE IS HEREBY GIVEN jointly by the Queen's Harbour Master Portsmouth and the Harbour Master, ABP Southampton, that from 24 February 2015 operations to lay new cables will commence in and around Lumps Fort Southsea and across to the Isle of Wight at Puckpool.

2. The cable laying areas are bounded by the following positions (see diagram below):

Solent: area from Southsea to Lumps Fort, across to No Man's Land and Horse Sands Forts and across to the Seaview area of the Isle of Wight. The area covers all the areas marked on Chart BA2037 as containing "Numerous Cables" and encompasses the area marked as prohibited for fishing and anchoring.



The area of activity is bounded by the following waypoints:

50 43.44N 001 07.71W
50 43.87N 001 07.29W
50 45.25N 001 04.56W
50 46.75N 001 04.43W
50 46.85N 001 03.90W
50 46.48N 001 03.58W
50 45.27N 001 03.48W
50 44.09N 001 04.40W
50 43.35N 001 06.96W.

3. The work will be carried out by the cable handling vessel "Roxanne Z", a 34 metre Multipurpose vessel. This will be supported two support RIBs and one crew transfer boat.

4. Operations will consist of an initial route clearance operation with a towed grapnel. The vessel will then lay fibre optic cables along two routes between Southsea and Puckpool, each of these will be simultaneously laid and buried by a towed plough device. The vessel will be slow moving and restricted in her ability to manoeuvre during the operations and where possible, an exclusion zone of 100 metres is to be maintained. If this is not possible for navigation safety reasons, then the vessel should be called on VHF in good time, and where possible, it should be passed ahead rather than astern. The "Roxanne Z" will be continually watching VHF Channel 12, and will keep VTS Southampton and QHM Portsmouth fully informed of progress and position. VTS will manage traffic to ensure that large vessels do not pass each other in the vicinity of operations in the main shipping channel.

5. All mariners are requested to keep a good lookout and pass well clear of operations when underway, which will be indicated by the "Roxanne Z" displaying appropriate shapes (Ball-Diamond-Ball) or lights (Red-White-Red). All vessels involved will be listening to Southampton VTS on Channel 12 and also on VHF Channel 11 throughout operations.

6. Cancel this LNTM on 1 April 2015.

[View notice online](#)

[Unsubscribe](#) • [Contact us](#)