

Subject: Notice Published
From: QHM Portsmouth <portsmouth@qhm.mod.uk>
Date: 26/01/2015 11:06
To: graham.castellano@btopenworld.com



QHM Portsmouth

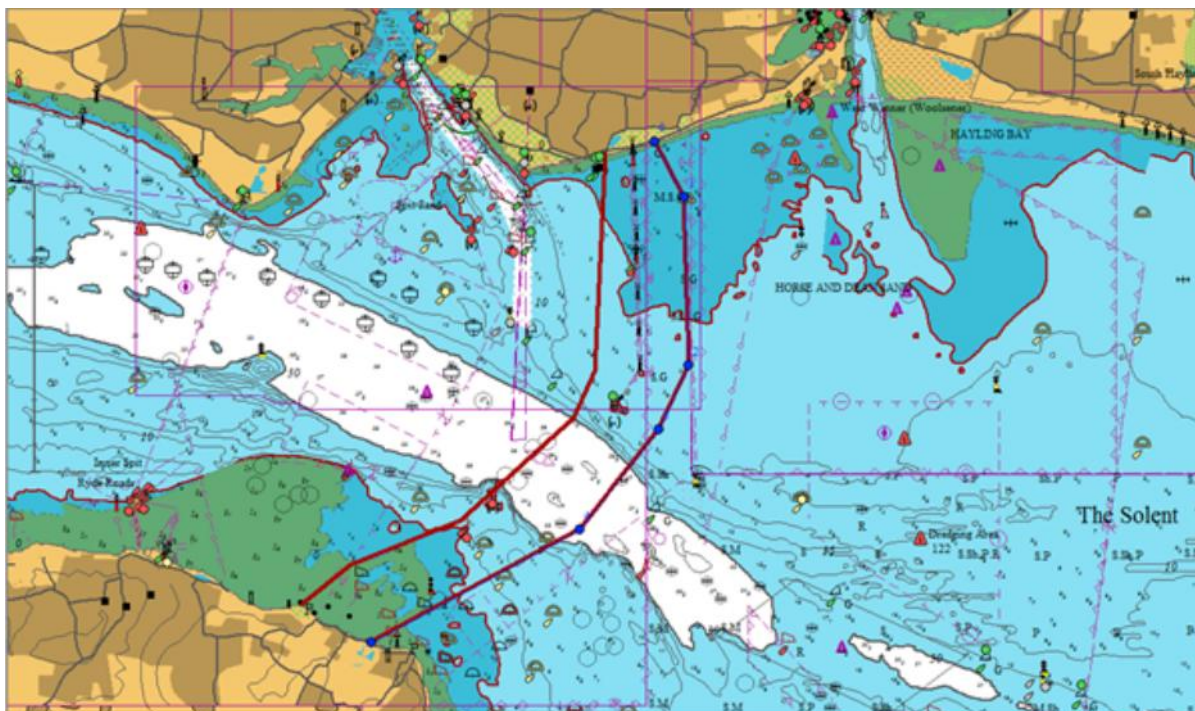
QUEEN'S HARBOUR MASTER PORTSMOUTH
Cable Removal Operations in the Solent including Diving
Operations 27 January to 28 February 2015

LNTM No 21/15

1. NOTICE IS HEREBY GIVEN jointly by the Queen's Harbour Master Portsmouth and the Harbour Master, ABP Southampton, that from 27 January 2015 operations to remove redundant cables will commence in and around Southsea and across to the Isle of Wight.

2. The cable removal areas are bounded by the following positions (see diagram below):

Solent: area from Southsea to Lumps Fort, across to No Man's Land and Horse Sands Forts and across to the Seaview area of the Isle of Wight. The area covers all the areas marked on Chart BA2037 as containing "Numerous Cables" and encompasses the area marked as prohibited for fishing and anchoring.



Western Limit Line Waypoints

W01 50° 46.773' N 1° 4.447' W Southsea Beach
 W02 50° 45.252' N 1° 4.564' W
 W03 50° 44.922' N 1° 4.799' W
 W05 50° 43.895' N 1° 7.270' W
 W06 50° 43.616' N 1° 7.812' W Puckpool Beach

Eastern Limit Line Waypoints

W01 50° 46.850' N 1° 3.894' W Southsea Beach
 W02 50° 46.465' N 1° 3.572' W
 W03 50° 45.287' N 1° 3.520' W
 W04 50° 44.846' N 1° 3.850' W
 W05 50° 44.146' N 1° 4.730' W
 W06 50° 43.359' N 1° 7.033' W Seaview Beach

3. The work will be carried out by the cable handling vessel “Suffolk Spirit”, a 22 metre Multicat. This will be supported by the guard vessel “Pampero”, an 11 metre Cabin RIB, in addition to a Diving Support RIB “Mistral”.

4. Operations will consist of diving to locate the ends of the cables and then recovery operations by the “Suffolk Spirit” to recover the cables. As part of the diving operations, a small pellet buoy may be laid close inshore. If left overnight, this will be marked with yellow/green cyalumes. For recovery operations, the “Suffolk Spirit” is planned to remain clear of the Main Channel where possible. Depending on progress, it may be necessary for the “Suffolk Spirit” to work across the channel, but this will be carefully coordinated with VTS Southampton on VHF Channel 12 and QHM Portsmouth VHF Channel 11.

5. All mariners are requested to keep a good lookout and pass well clear of operations when underway, which will be indicated by the “Suffolk Spirit” displaying appropriate

shapes (Ball-Diamond-Ball) or lights (Red-White-Red). All vessels involved will be listening to VHF Channel 11 throughout operations.

6. Cancel this LNTM on 10 March 2015.

[View notice online](#)

[Unsubscribe](#) • [Contact us](#)