

**Subject:** Notice Published

**From:** QHM Portsmouth <portsmouth@qhm.mod.uk>

**Date:** 30/01/2015 15:31

**To:** graham.castellano@btopenworld.com



QHM Portsmouth

QUEEN'S HARBOUR MASTER PORTSMOUTH  
Maintenance Dredge works Fountain Lake - Portsmouth  
International Port Maintenance Dredging

LNTM No 22/15

---

The following is a re-transmission of Portsmouth International Port Local Notice to Mariners 02/15.

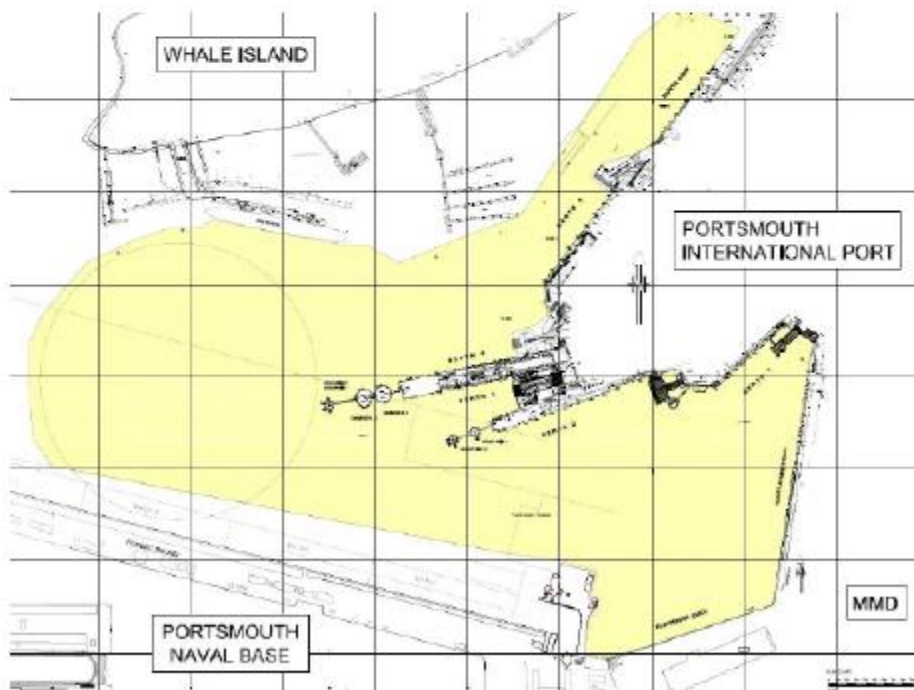


Portsmouth International Port – Local Notice to Mariners No. 02/15

Dated 30th January 2015

### Maintenance Dredge works Fountain Lake - Portsmouth International Port

1. **NOTICE IS HEREBY GIVEN** by the Harbour Master of Portsmouth International Port that maintenance dredging of the Cruise and Ferry Port, Albert Johnson Quay, Flathouse Quay and Fountain Lake will commence on or about 31st January 2015.
2. A Chart showing the works area outlined in yellow is shown below.



3. The works will be conducted by the trailer suction hopper dredger "Contender" and associated seabed levelling works by the multicat vessel "Aaron". Bathymetric surveys will also be undertaken before, during and after the works by the small survey vessel in attendance. All vessels pictured below.



4. The vessels will display the necessary signals under the International Regulations for the Prevention of Collisions and they will move as appropriate so as not to obstruct the arrival and departures of **scheduled** commercial vessel movements during the works.
5. Mariners are requested to give the working vessels a wide berth and pass carefully at slow speed.
6. Bunkering, lay-by permissions and up to date information on the progress of the works can be obtained from "Portsmouth Harbour Radio" on VHF CH 11.
7. The works are scheduled to take up to 10 days to complete.
8. This notice should be cancelled upon completion of the works.

**Captain Rupert Taylor**

**Harbour Master**

**Portsmouth International Port**

Cancel this LNTM on 20 February 2015.

[View notice online](#)

[Unsubscribe](#) • [Contact us](#)